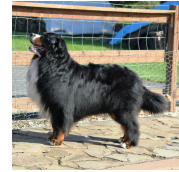


**CH TOSHAY'S SEIZE THE MOMENT AT HAPI MTN**  
**DOB:** Feb 24, 2014 - Mar 16, 2025 **Sex:** M **Reg#:** WS46990102 (AKC)  
**Owner:** KATHY DEYO & AMY PANSELL & DENISE WAITING  
**Cert/Test:** OFA/H-G OFA/EL CARD  
**BG#110022**



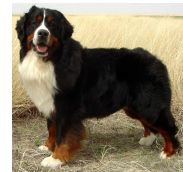
**Am/Can CH RIVERHAUS JED V/T RIJKENSPARK**  
NHSB 2510790 | 2004 - 2012 | BG#24822  
OFA/H-G OFA/EL CERF CARD vWD DM



**VALLEVERDE'S STOLLER**  
SG078553 | 2006 - 2014 | BG#32135  
OFA/H-E OFA/EL CERF CARD DM

**Can CH VALLEVERDE'S QUIET SUMMER**  
PA919237 | 2004 - 2013 | BG#20948  
OVC/H-N OVC/EL CERF CARD

**SIRE:**  
**BRECHBUHLER'S ENOUGH ABOUT YOU**  
WS27034603 | 2008 - 2017 | BG#60488  
OFA/H-G OFA/EL CERF CARD vWD DM



**Am/Can CH FICH ZACK VAN 'T STOKERYBOS**  
WR07407701 | 2000 - 2008 | BG#38071  
OFA/H-G OFA/EL CERF CARD vWD



**Am/Can CH BRECHBUHLER'S ALL ABOUT ME VEBNET**  
WS12366301 | 2005 - 2015 | BG#24902  
OFA/H-G OFA/EL CERF CARD vWD



**Am/Can CH EBNET'S X-CALIENTE**  
WR05793601 | 2001 - 2011 | BG#39454  
OFA/H-G OFA/EL CERF CARD vWD



**CH HAPI MTN UP AND OVER**  
WS00894501 | 2002 - 2013 | BG#19761  
OFA/H-G OFA/EL CARD

**GCH HAPI MTN COMMANDER IN CHIEF**  
WS16478605 | 2006 - 2013 | BG#46118  
OFA/H-G OFA/EL CERF



**DAM:**  
**CH TOSHAY GLACIER PEAK**  
WS27385502 | 2008 - | BG#65863  
OFA/H-E OFA/EL

**CH HAPI MTN'S BEST KEPT SECRET**  
WP96899007 | 2000 - 2013 | BG#35823  
OFA/H-G OFA/EL CERF CARD vWD



**CH RUSH HILL'S SOLID EVIDENCE**  
WP91942403 | 1999 - 2008 | BG#35231  
CERF CARD

**CH TOSHAY RHYTHM DANCE**  
WR07325001 | 2002 - 2012 | BG#22767  
OFA/H-E OFA/EL

**DEL CONTI ALWAYS A LADY**  
WP88558305 | 1998 - 2004 | BG#35845  
OFA/H-E OFA/EL